

Effective STEM Leaders Have an Outsized Impact

Principal Investigator
Drew Suss, PhD

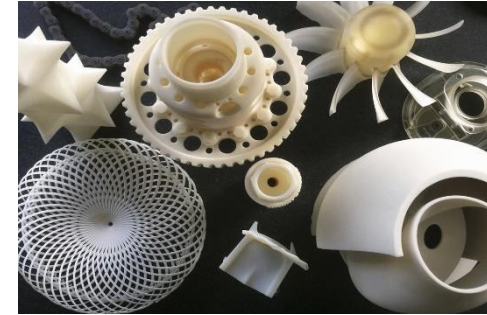
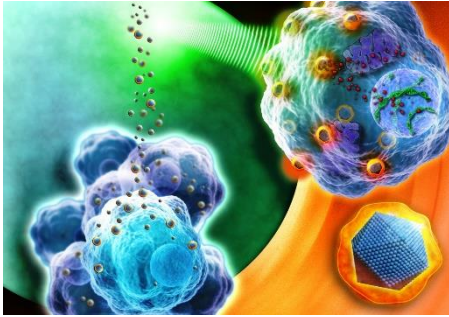
What is STEM?

STEM is a short way of saying work involving:

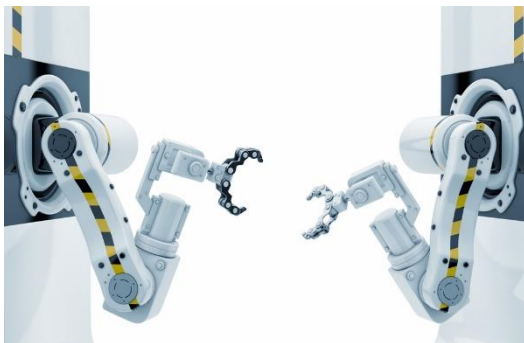
- Science
- Technology
- Engineering
- Math

But that hides it's impact.

STEM is this ...



And
More



What is Effective?

Leading in a way that increases teams' capacity to solve problems sustainably.



Why We Should Care

12% of US adults work in STEM fields

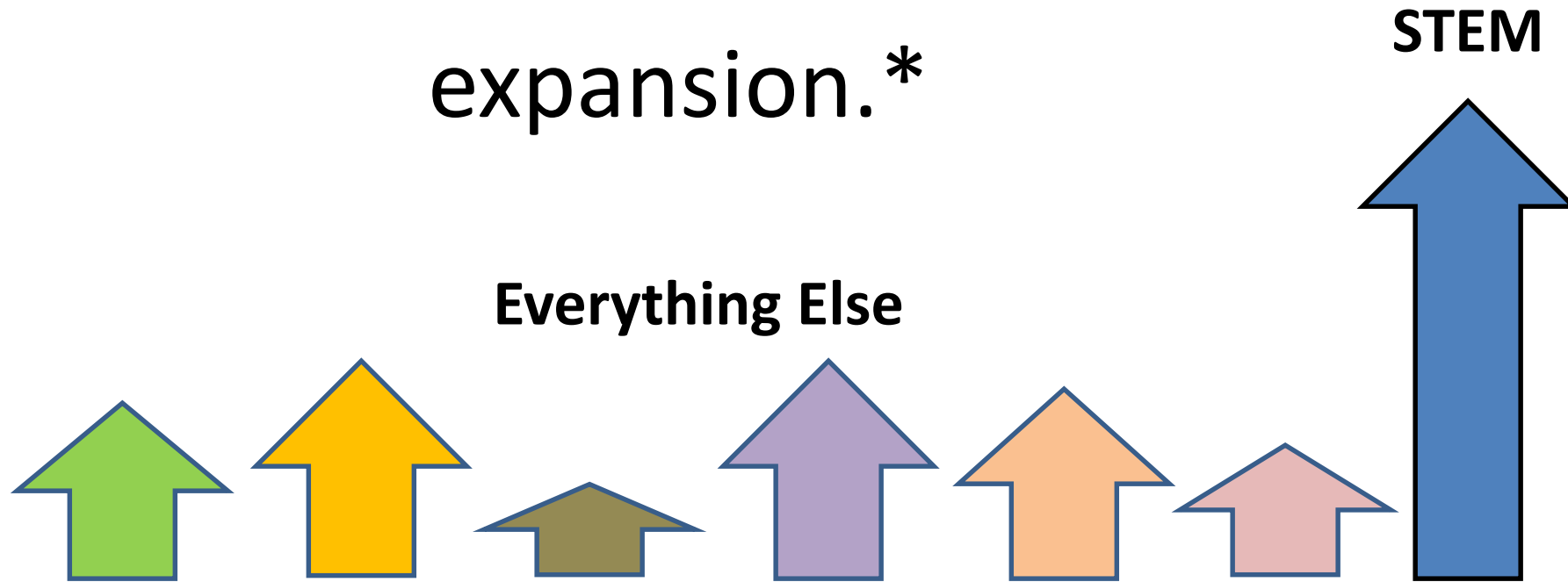
They drive an estimated

50% Sustained Economic Expansion*

*Adkins, 2012

Really?

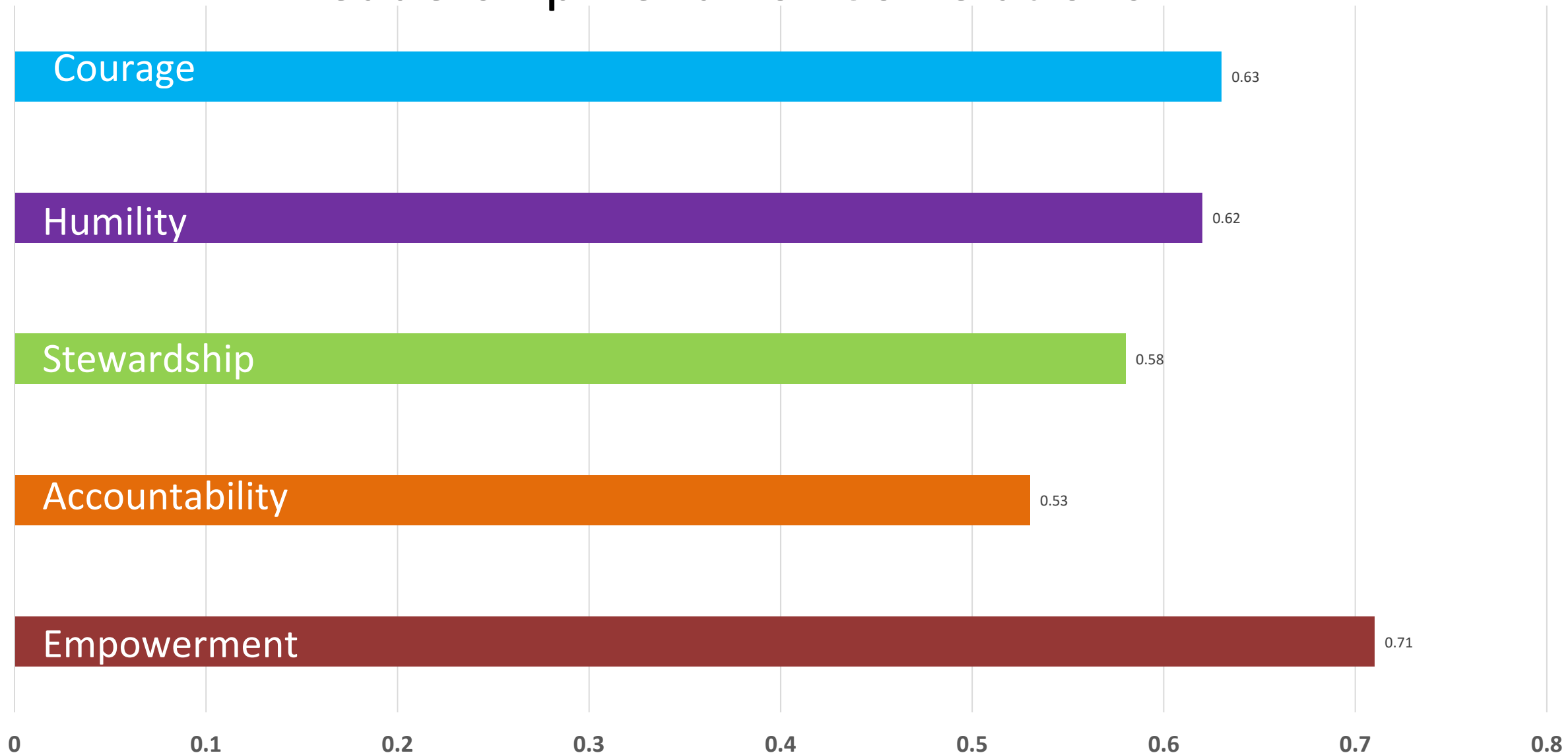
Yes. STEM drives 50%
of sustained economic
expansion.*



So what....?

Leaders can increase their ability to
influence outcomes.

Leadership Behavior Correlations



H3 *r values*

n = 34

p = .0001

For Nerds / Nerdettes

SLS Factor	Empowerment	Accountability	Steward- ship	Humility	Courage	Standing Back	Authenticity	Forgiveness
r	.71	.53	.58	.62	.63	.35	.47	.34
r^2	.50	.28	.34	.39	.40	.12	.22	.11

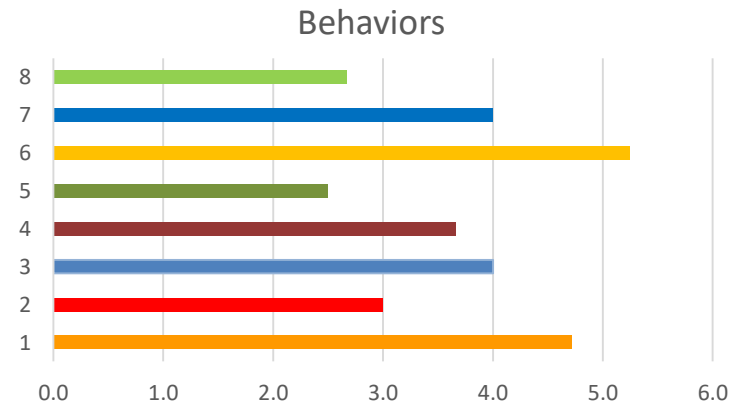
$n = 34$ H3 $p = .0001$

Now what?

- [Join the Phase 2 trial](#)
- Negligible burden
- Compare results
- See if they replicate
- If so...it's the model you want

Participation

- Leaders and team members
- Voluntary and confidential
- Two 15 minute surveys, twelve months apart
- Institutional Review Board Approved
- Sponsored by the Institute for Social Innovation



Join the Phase 2 trial

Contact Drew Suss

dsuss@email.fielding.edu

drew.suss@truebridgepartners.com

847 948 7342